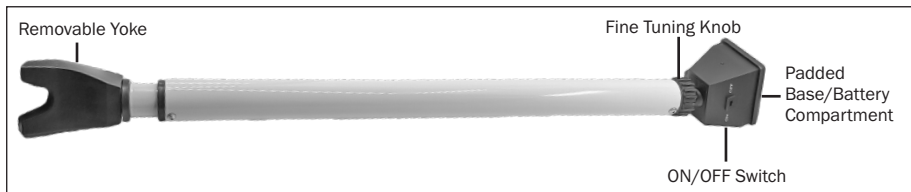


Flipo® Door Jammer With Alarm

Thanks for purchasing another Flipo® product intended to make life a little easier. FLIPO® offers a wide variety of unique products of the highest quality. To ensure the maximum performance of your product, please read and save these instructions.

INCLUDES

- 1x Door Jammer With Alarm
- 1 x 9-Volt Battery (Installed)
- 1x Instruction Manual

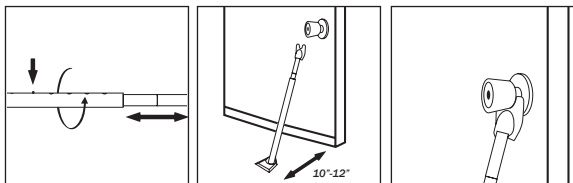


USE

Before First Use

Remove Door Jammer from all packaging.

Your Door Jammer Alarm comes with a 9-volt battery pre-installed. Simply remove the padded cover from the base and take out the insulator tab protruding from the battery compartment.



Installation On Hinged Doors

1. Locate the silver locking pin on the bar.
2. Hold the yoke on the inner tube, press the pin in, and rotate the outer tube slightly so that holes and locking pin are misaligned.
3. Slide the inner tube in or out until you reach the required length.
4. Rotate the outer tube until the silver locking pin clicks and locks in the proper hole.
5. Ensure that the Alarm's ON/OFF switch on the base is facing away from the door.
6. Slide the padded base towards the door until the bar is tight.

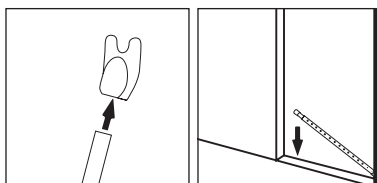
Note: You can also use the fine-tuning knob located where the bar connects to the base/alarm to adjust the bar to the perfect length.

7. Move the alarm ON/OFF switch on the base to the ON position to activate the alarm. The alarm will sound briefly and the indicator light on the base will flash to indicate the alarm is activated. The indicator light will be ON when the alarm is triggered. To turn the alarm OFF after it is triggered, move the ON/OFF switch to the OFF position.

Important: The padded base should be 10- 12 inches from the door when the yoke end is placed tightly against the underside of the doorknob. DO NOT place padded base on loose rugs or floor mats.

Installation On Sliding Doors

1. Remove the yoke from the inner tube by pulling yoke out of yoke receiver.
2. Adjust the bar length to fill the sliding door track (steps 1-5 above).
3. Use the fine-tuning knob to get perfect snug fit.
4. Activate the alarm (step 7 above).



Rapid Deployment

Once the Door Jammer has been adjusted properly, store it in a convenient place so it can be used quickly to secure the desired door.

Changing the Battery

If your alarm weakens or does not sound, your battery needs to be changed.

1. Disengage Door Jammer from the door.
2. Remove the padded cover from the base.
3. Open the battery compartment using the compartment cover locking tab.
4. Remove the old battery from the battery compartment.
5. Insert the new battery according to the polarity graphic located inside the battery compartment.
6. Replace the compartment cover and push the locking tab in to lock.

CARE/CAUTION

1. **Caution: Loud Alarm Sound - Please Maintain a Safe Distance**
2. Turn the alarm OFF when not in use to preserve battery life.
3. Remove battery if the unit is not used for prolonged periods of time.
4. Do not expose your product to rain or snow.
5. Do not drop from high distances.
6. Do not disassemble this product or attempt to modify it in any way.
7. Do not dispose of this product in the garbage. Disposal of batteries in the garbage is unlawful under state and federal environmental laws.
8. Use a damp cloth to clean if necessary.

PLEASE NOTE THAT CHANGES OR MODIFICATIONS OF THIS PRODUCT IS NOT EXPRESSLY APPROVED BY THE PARTY RESPONSIBLE FOR COMPLIANCE COULD VOID THE USER'S AUTHORITY TO OPERATE THE EQUIPMENT.

NOTE: This equipment has been tested and found to comply with the limits for a Class B digital device, pursuant to Part 15 of the FCC Rules. These limits are designed to provide reasonable protection against harmful interference in a residential installation. This equipment generates, uses and can radiate radio frequency energy and, if not installed and used in accordance with the instructions, may cause harmful interference to radio communications. However, there is no guarantee that interference will not occur in a particular installation.

If this equipment does cause harmful interference to radio or television reception, which can be determined by turning the equipment off and on, the user is encouraged to try to correct the interference by one or more of the following measures:

- Reorient or relocate the receiving antenna.
- Increase the separation between the equipment and receiver.
- Connect the equipment into an outlet on a circuit different from that to which the receiver is connected.
- Consult the dealer or an experienced radio/TV technician for help.

This device complies with Part 15 of the FCC Rules. Operation is subject to the following two conditions: (1) this device may not cause harmful interference, and (2) this device must accept any interference received.

30 DAYS LIMITED WARRANTY:

FLIPO GROUP warrants to the original purchaser, when used in North America only, that this product shall be free of defects in material and workmanship. This warranty applies within 30 days of the original purchase with normal home use. This warranty does not apply for commercial use of this product. Use outside of North America is not covered by this warranty.

During the warranty period, we will at our option, repair or replace this product without charge, which shall be the consumer's sole remedy. ALL RETURNS must be accompanied by a Return Authorization Number, which is issued by the Customer Service Department of Flipo Group. Please contact Customer Service BEFORE returning any item. Once you have obtained a Return Authorization Number, the product must be returned with a clear copy of the proof of purchase, showing place and date of purchase, postage and insurance prepaid to:

Flipo Group
613 First Street
La Salle, IL 61301

This warranty does not cover installation, adjustments in the home, nor damage due to accidents, misuse, abuse, fire or other acts of God, incorrect line voltage, damage to other equipment caused by improper installation, unauthorized or improper modification. This warranty gives you specific legal rights and you may also have other rights that vary from state to state.



Manufactured by Flipo Group Limited La Salle, IL
Questions or Comments? Call: (815) 223-9942 • Email: info@flipo.com
Fax: (815) 223-9266

MADE IN CHINA